

DTC	22	Compressor Lock Sensor Circuit
------------	-----------	---------------------------------------

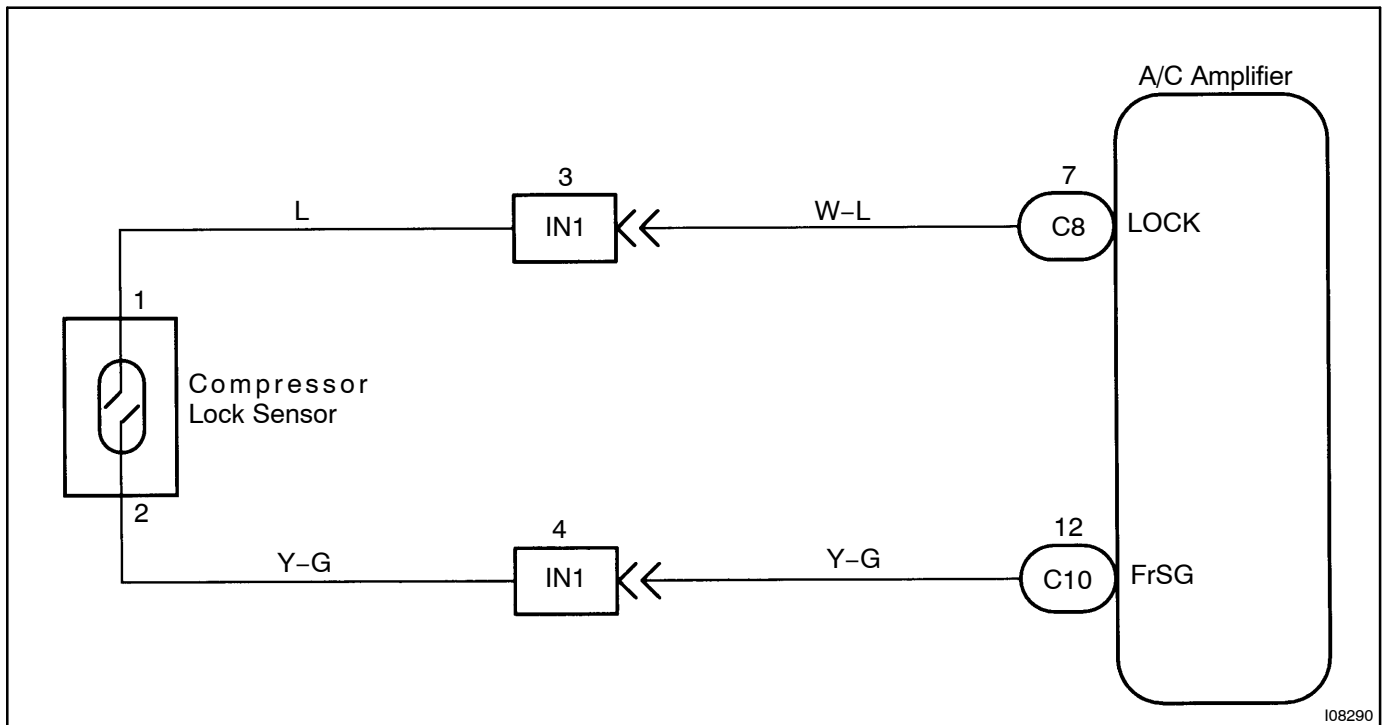
CIRCUIT DESCRIPTION

This sensor sends 4 pulses per engine revolution to the A/C amplifier.

If the number ratio of the compressor speed divided by the engine speed is smaller than a predetermined value, the A/C amplifier turns the compressor OFF. And, the indicator flashes at about 1 second intervals.

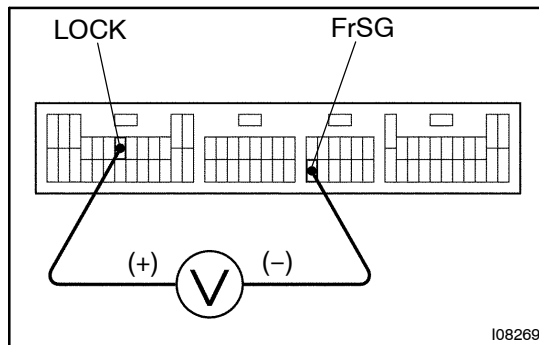
DTC No.	Detection Item	Trouble Area
22	All conditions below are detected for 3 secs. or more (a) Engine speed : 450 rpm or more (b) Ratio between engine and compressor speed deviates 20 % or more in comparison to normal operation.	<ul style="list-style-type: none"> • Compressor. • Compressor drive belt. • Compressor lock sensor. • Harness and connector between compressor lock sensor and A/C amplifier • A/C amplifier

WIRING DIAGRAM



INSPECTION PROCEDURE

1	Check voltage between terminal LOCK and FrSG of A/C amplifier.
---	--

**CHECK:**

- (a) Start engine.
- (b) Push AUTO SW.
- (c) Measure voltage between terminal LOCK and FrSG of A/C amplifier connector when A/C switch is ON.

OK:

Voltage : 10 – 14 V

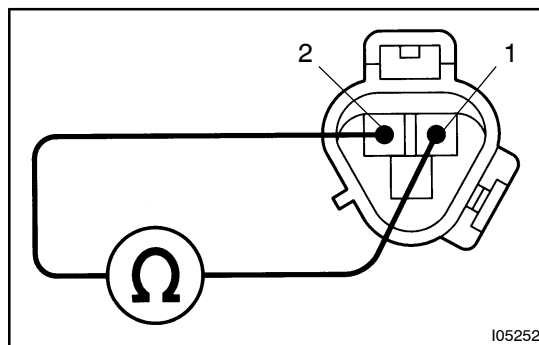
OK

Go to step 2.

NG

Proceed to next circuit inspection shown on problem symptoms table (See page [DI-777](#)). However, if DTC 22 is displayed, check and replace A/C amplifier.

2	Check compressor lock sensor.
---	-------------------------------

**PREPARATION:**

- (a) Jack up the vehicle.
- (b) Disconnect compressor lock sensor connector.

CHECK:

Measure resistance between terminals 1 and 2 of compressor lock sensor connector.

OK:

Resistance :

at 20° C (68° F) : 990 – 1210 Ω

at 100° C (212° F) : 1280 – 1550 Ω

NG

Replace compressor.

OK

3	Check harness and connectors between A/C amplifier and compressor lock sensor (See page IN-33).
---	--

NG**Repair or replace harness or connector.****OK****Check and replace A/C amplifier and compressor lock sensor.**